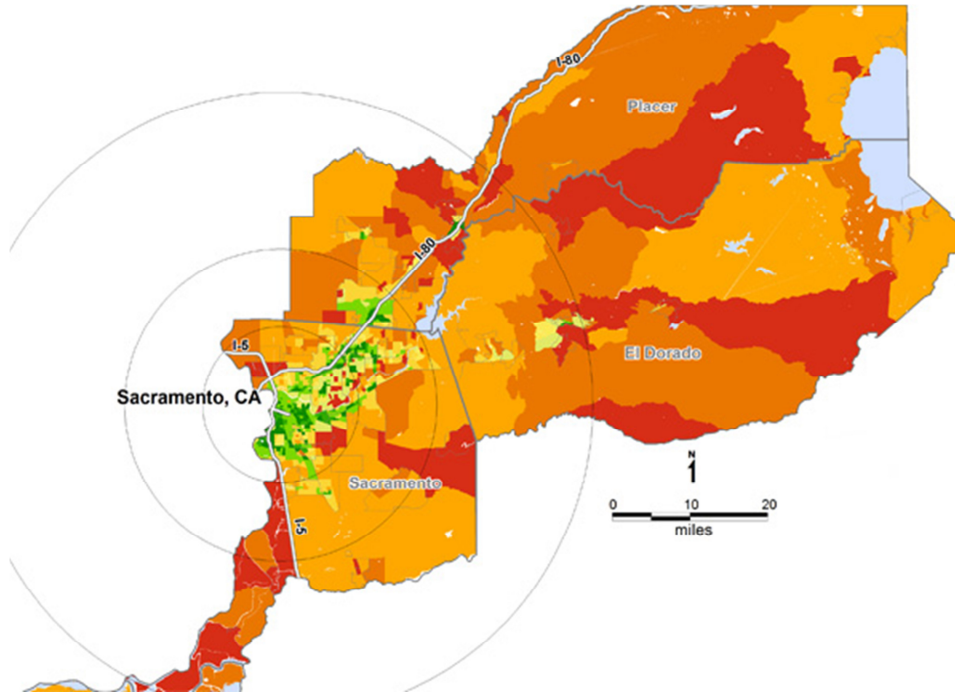
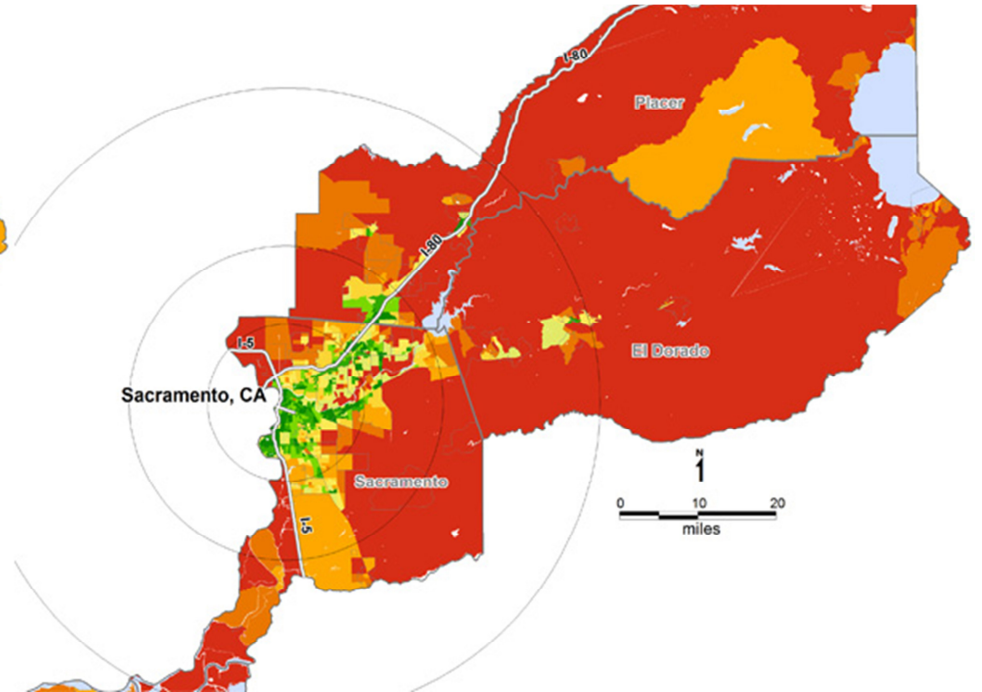


Sacramento Transit Access for Seniors

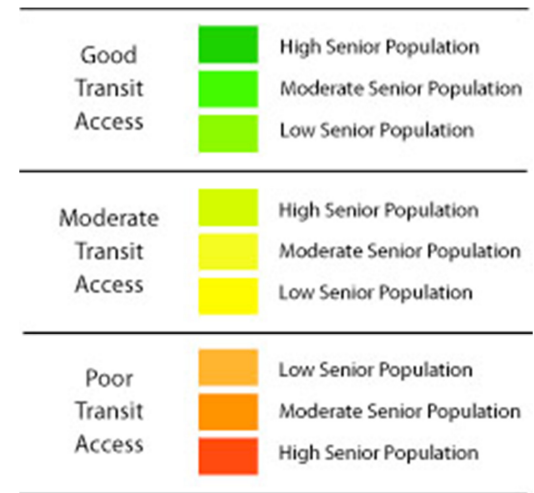
Transit Access for Seniors Age 65 and Older in 2000



Transit Access for Seniors Age 65-79 in 2015



Sacramento is a metropolitan area of over 1 million people. In 2000, 65,552 seniors age 65 and older had poor transit access. By 2015, the share of seniors age 65-79 with poor transit access will have increased to 97,228, a 48% increase.



Transit Access and Demographic Change Over Time

This color-coded map provides information on the intensity of transit service as well as the senior population with access to that service. For each level of transit service (poor, moderate, good) there are three levels of senior population density (low, medium, and high). By combining these variables into one color-coded scale, this map is able to show change over time. As the large baby boom generation ages in place, the senior population increases in many of the Census blocks that have poor transit access. This is reflected by the change in color from predominantly yellow and orange to dark red. The data presented in these maps is at the Census block group level.

Senior Population Levels	Senior Percentage of the Block Group Population
Low Senior Population	<12%
Medium Senior Population	≥12% to <16%
High Senior Population	≥16%

Metro Area	Percentage of Population 65 to 79 with Poor Transit in 2015	Population 65 plus with Poor transit in 2000	Population 65 to 79 with Poor Transit in 2015	Percentage Change
1. San Francisco, CA	12	21,210	34,349	62
2. San Jose, CA	15	21,242	35,316	66
3. Oakland, CA	18	41,821	65,304	56
4. San Diego, CA	39	109,548	142,315	30
5. Sacramento, CA	41	65,552	97,228	48
6. Albuquerque, NM	42	27,961	44,514	59
7. Boston, MA	45	178,366	231,944	30
8. Urbana Champaign, IL	46	7,235	9,753	35
9. Sioux Falls, SD	48	7,442	10,734	44
10. New Orleans, LA	52	71,587	104,198	46

11. Springfield, IL	57	12,674	18,171	43
11. Providence, RI	57	93,133	101,163	9
13. Orlando, FL	58	121,450	138,751	14
13. Daytona Beach, FL	58	59,993	51,107	-15
15. Tampa, FL	60	262,582	228,724	-13
15. Boise, ID	60	21,684	34,239	58
17. Duluth, MN	64	23,632	25,042	6
18. Charleston/Huntington WV	65	22,043	28,538	29
19. Portland, Maine	66	17,773	24,355	37
19. Yakima, WA	66	14,065	19,547	39
21. Detroit, MI	68	329,191	445,743	35
