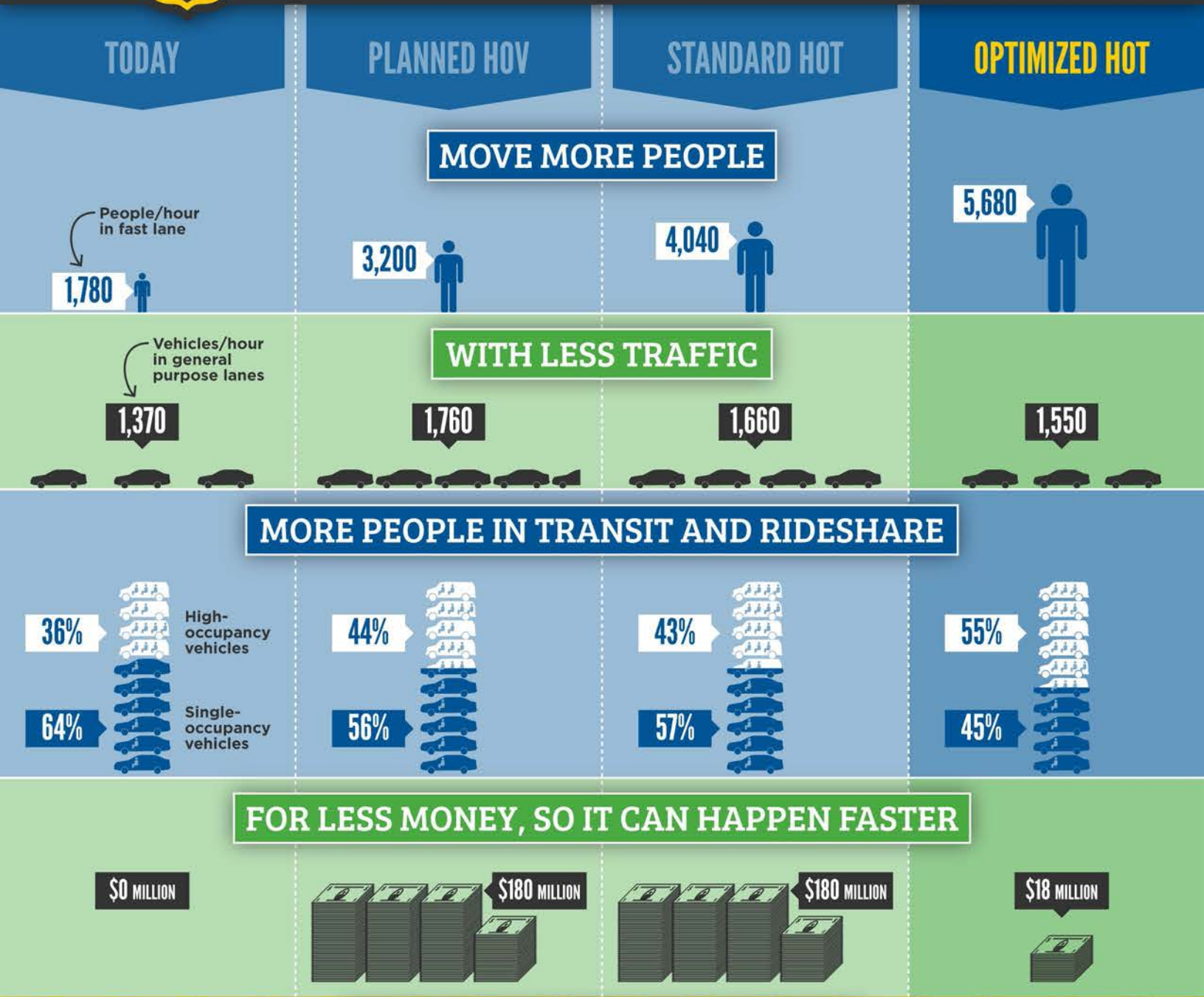


INNOVATION REQUIRED

MOVING MORE PEOPLE
WITH LESS TRAFFIC

AS SEEN THROUGH
HIGHWAY 101

Bay Area planners are looking to add more capacity to Highway 101 along the Peninsula—but it could be so much better. Consider the four scenarios below to see how Highway 101 is a great place to do HOT lanes right!

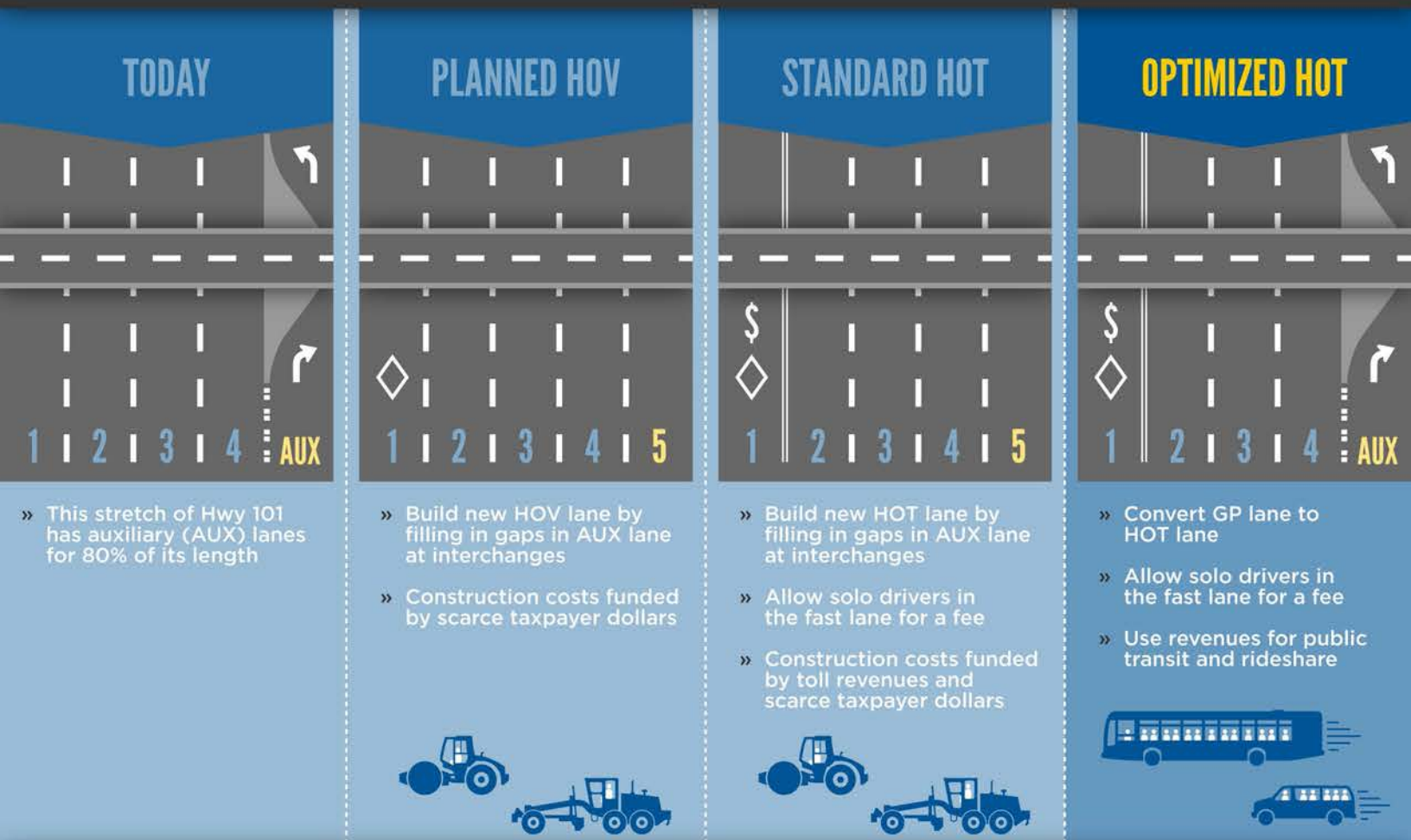


HOW CAN THIS BE?

WHAT IS HOT?

High occupancy toll (HOT) lanes, also called “express lanes,” allow solo drivers to pay a toll to use the carpool lanes. Tolls are dynamically adjusted to ensure a free pool of traffic in the lane. The big question is how revenues from HOT lanes get used. The full report looks at future scenarios for Highway 101 that use HOT revenues in different ways.

If San Mateo County proceeds as planned, it will use scarce taxpayer dollars to build new lanes, leaving less for new transportation choices. The Optimized HOT scenario saves money on construction, allowing the county to keep those taxpayer dollars for other priorities. We can use HOT revenues for express buses, vanpools, and ridesharing, so we can move more people with less traffic.



LOCATION



Highway 101 between I-380 and Whipple Road is the study area for this infographic

LANE lingo

- GP: GENERAL PURPOSE**
Lane used by all vehicles
- AUX: AUXILIARY**
Lane that exits and re-enters at interchanges
- HOV: HIGH OCCUPANCY VEHICLE**
Lane reserved for vehicles with 2+ or 3+ occupants
- HOT: HIGH OCCUPANCY TOLL**
Lane reserved for vehicles with 2+ or 3+ occupants, as well as solo drivers who pay a toll

PROTECT LOCAL STREETS

EXPANDING HIGHWAYS means even more vehicles will pour onto local streets at rush hour. If we instead move more people with transit and vanpools, as in the Optimized HOT scenario, we can avoid these negative impacts on our local streets!

YOU CAN HELP!

HELP MAKE SURE Highway 101 is a pilot to move more people with less traffic!
Sign up at: www.TransformCA.org/HOT101
Or visit our Facebook page: www.facebook.com/TransformCA



TRANSFORM

Transform works to create world-class public transportation and walkable communities in the Bay Area and beyond. We build diverse coalitions, influence policy, and develop innovative programs to improve the lives of all people and protect the environment. We've won literally billions of dollars and groundbreaking policies in support of public transportation, smart growth, affordable housing, and bicycle/pedestrian safety.

HOW CAN THIS BE?

READ OUR FULL STUDY, *Innovation Required: Moving More People with Less Traffic*, available at www.TransformCA.org/HOT101