

Public Transportation Saves Families Billions While Protecting Our Climate



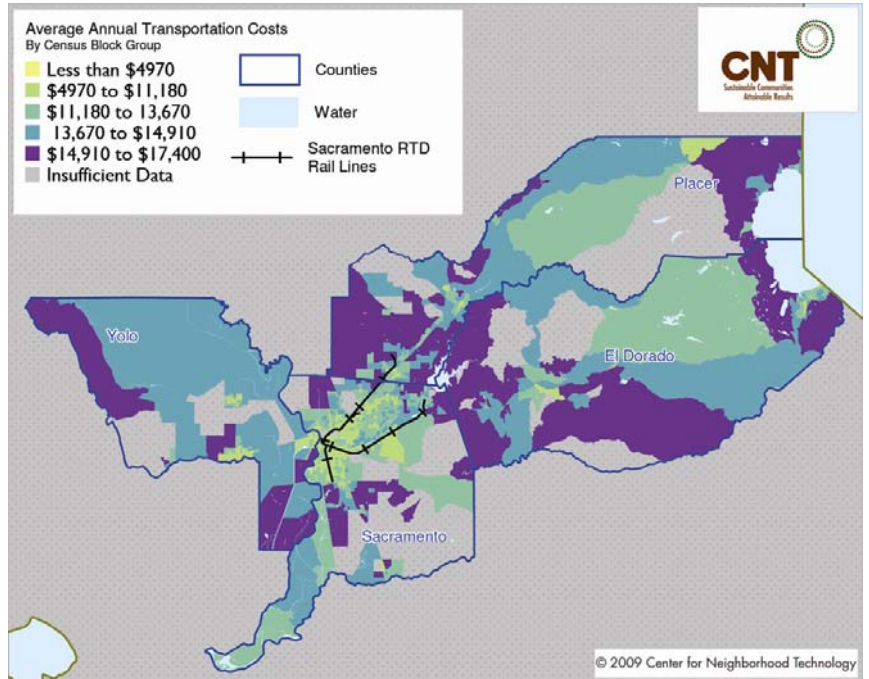
To examine the savings being harnessed by families living in more efficient neighborhoods, TransForm analyzed spending differences for the four largest regions of California: Los Angeles and its neighboring counties), San Francisco Bay Area, San Diego and Sacramento.

As is evident on the map the highest transportation costs (darker colors) tend to be in areas not served by transit. In contrast, many of the region's most convenient neighborhoods are the urban and suburban areas designed more than 75 years ago, which:

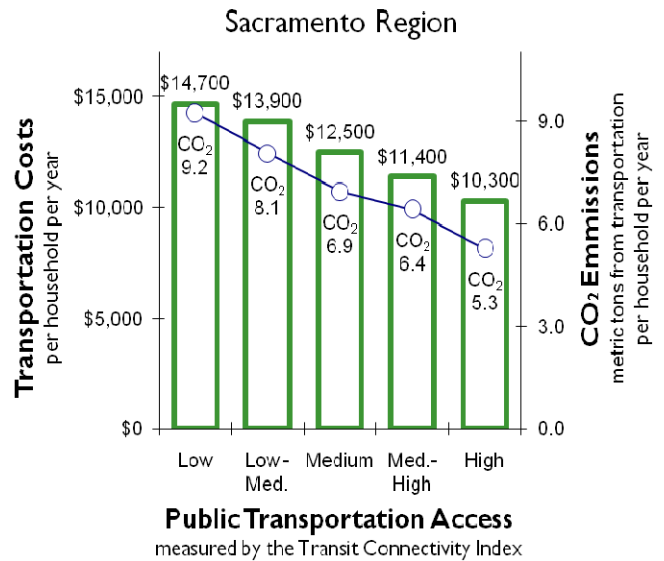
- put housing, jobs and services closer together;
- provide more compact and walkable areas;
- support more public transportation service, in part because of the first two factors.

Households in the 20% of neighborhoods that have very good access to public transportation spend significantly less on transportation each year. If the other communities had the same level of spending their residents, combined, would **save \$2.2 billion each year on transportation costs!** That would give the average household \$2,825 more to spend on education, health care, etc.

As seen in the graph to the right, the correlation between transit access and spending is very strong. As we expand transit, or build more homes near existing transit, it gives more families opportunities to save money.



Annual transportation Costs per Household, by Census Block in the Sacramento Region

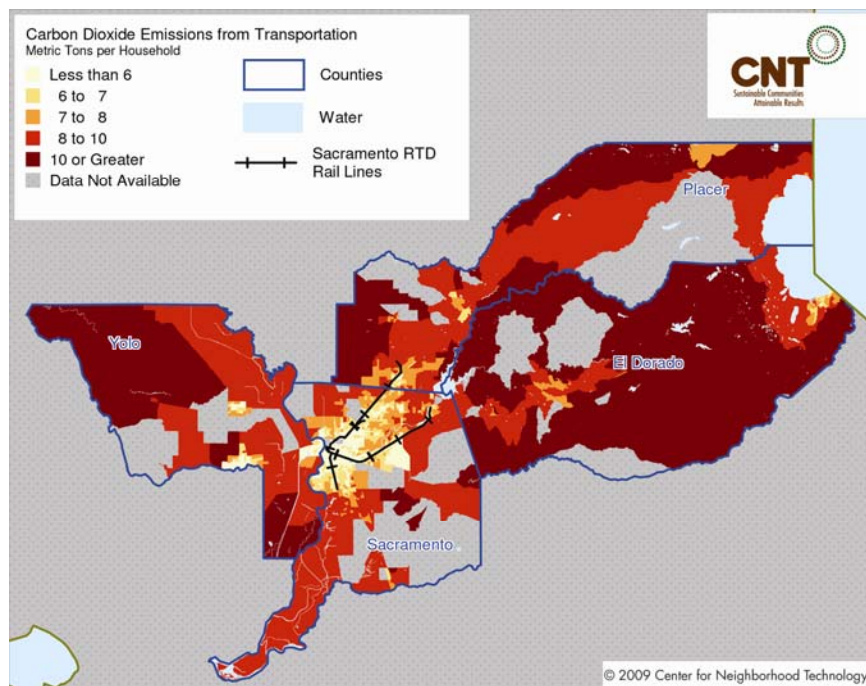


Providing strong public transportation options will also help our efforts to combat global warming. The differences in emissions are huge. Compared to the 20% of households with the best public transportation access, other households emit on average 27% more CO₂ from driving.

As public transit service is cut, it forces more families into the higher spending quintiles. This means they are spending more money on gasoline, insurance and other costs, they are creating greater traffic gridlock and emitting even more greenhouse gases.

Transit cuts also result in greatly reduced access to jobs and other opportunities, harming employers and potential employees alike. Supporting the transit proposed in the region's Sustainable Communities Strategy with strong state funding will be critical for our economy and our environment.

All information from TransForm's *Windfall for All* report. Full report available at www.TransFormCA.org



Annual Transportation-related CO₂ Emissions per Household Census Block

Financial savings and CO₂ reductions if all neighborhoods matched the 20% of neighborhoods that have the best public transportation in that region.

Region	Total Annual Cost Savings (billions)	Personal Cost Savings/household	CO ₂ reduction from Vehicles
SF Bay Area	\$10.7	\$5,450	42%
Los Angeles/SCAG*	\$15.4	\$3,600	38%
San Diego	\$2.8	\$3,515	30%
Sacramento	\$2.2	\$2,825	27%
TOTAL	\$31.2	\$3,847	34%

* Analyzed for the five-county region of the Southern California Association of Governments (SCAG), except Imperial County. Author's calculations of CNT 2009 data.